

# Using the AFRESH software

Ruaraidh Dobson

University of Aberdeen

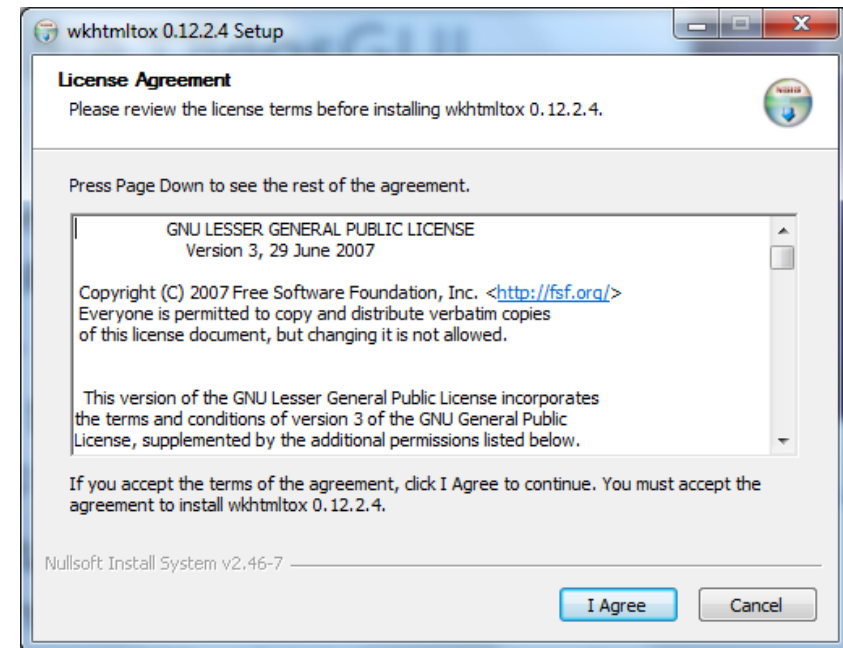
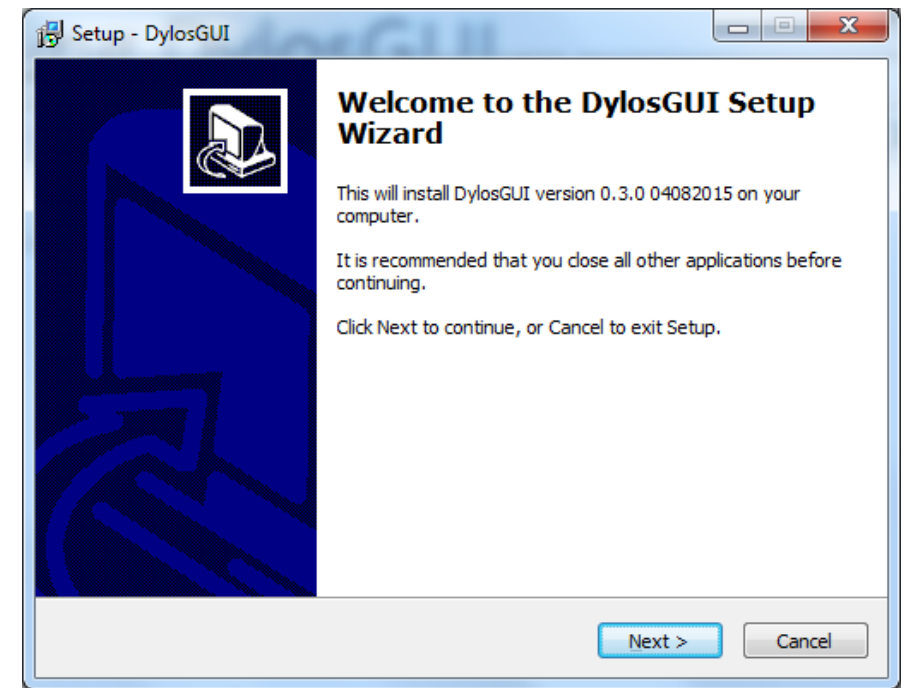
[Ruaraidh.Dobson@abdn.ac.uk](mailto:Ruaraidh.Dobson@abdn.ac.uk)

# You will need...

- A laptop running Windows XP or later
- A Dyllos DC1700
- A USB Serial converter cable
  - This will come with a CD containing a piece of software called a “driver”. You need to install it before you do anything else.
- The AFRESH software
  - You can get this from <http://smokefreehomes.network/AFRESH>
  - You’ll need to be able to install software on your computer. If in doubt, ask your IT department.
  - Be aware that AFRESH is still in development at the moment, so will be a few bugs. If you notice any, please email me at [Ruairaidh.Dobson@abdn.ac.uk](mailto:Ruairaidh.Dobson@abdn.ac.uk)

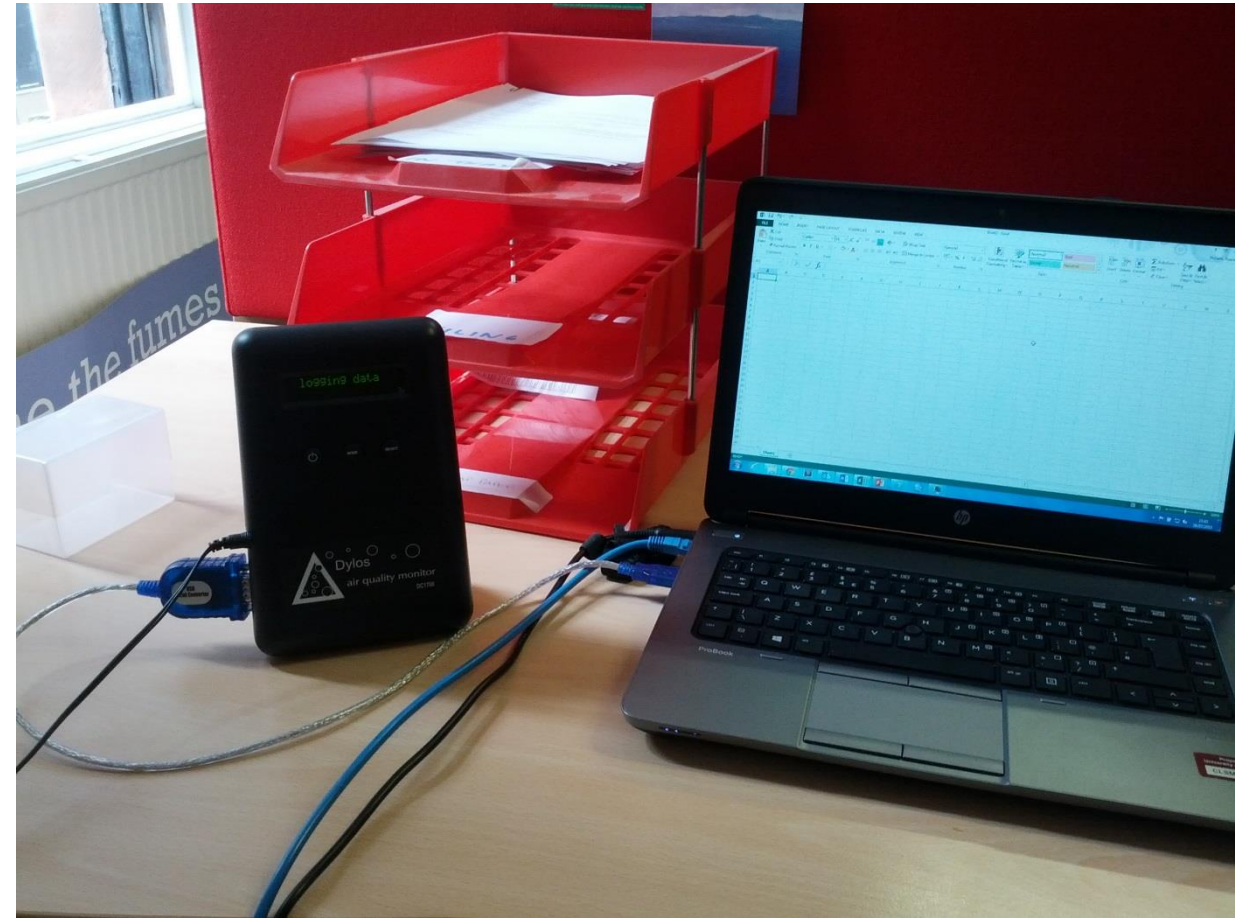
# Installing AFRESH

- You'll need to have an administrator install the software for you.
- Launch the installer and follow the steps.
- The installer will also install a programme called “wkhtmltox”, which is required to make PDF reports.



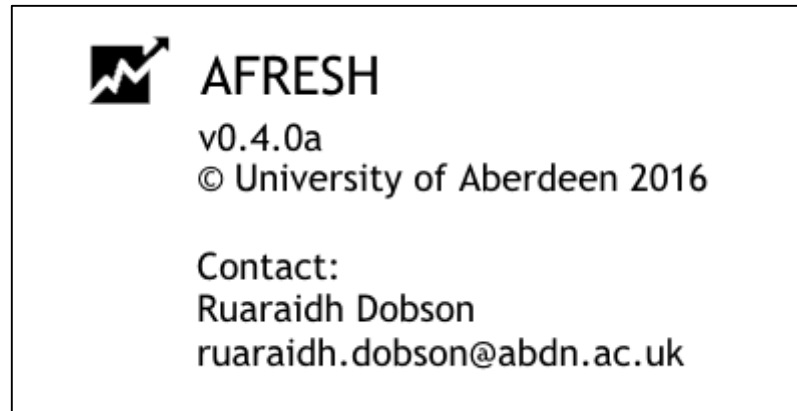
# First of all...

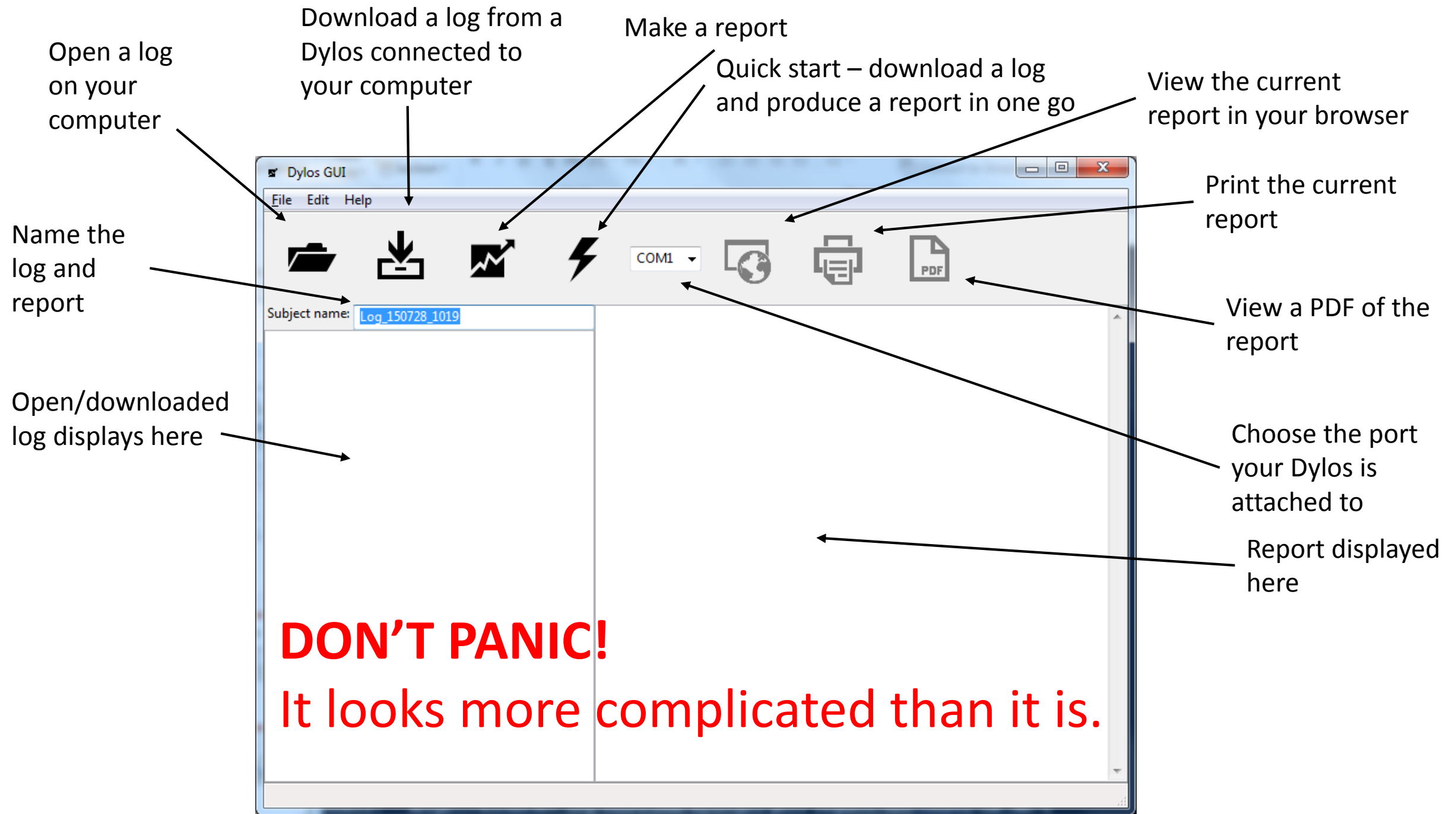
- Make sure that the Dylos is switched on, showing “Logging Data” on the front
- Then, plug the Dylos into your laptop or PC with your converter cable



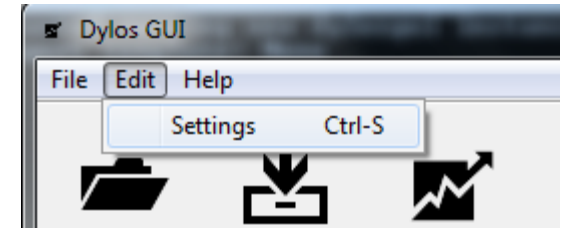
# Now open AFRESH

- There should be a start menu icon that looks like this:
- The software should start up.
- You'll see a splashscreen like the below, and then...





# Settings



Choose where to save reports. By default, this will be My Documents\Dylos Logs

If this is ticked, your web browser will automatically open new reports when they are generated (recommended)

Choose a different template for producing air quality reports.

This is an experimental setting – make sure it's **not** ticked.

A screenshot of the "Settings" dialog box. It has a title bar with "Settings" and a close button. The dialog contains several settings:

- "Save reports to this directory" with a text field showing "Documents\Dylos Logs" and a "Browse" button.
- "Automatically open new reports in your browser?" with a checked checkbox.
- "Set threshold in mins to remove orphan records from start and end" with a spin box set to "0".
- "Use this template to produce reports" with a text field showing "C:\Users\s02rd5\De" and a "Browse" button.
- "Make a PDF report as well as HTML" with a checked checkbox.
- "Ignore readings with large particle percentage greater than a threshold" with an unchecked checkbox.
- "If ignoring high large particle percentage, what threshold to use?" with a text field set to "3.0".

At the bottom are "Save" and "Cancel" buttons.

If there are a few minutes of data from a different day at the start or end of a log, DylosGUI ignores them as they are usually from the few minutes when data's being downloaded from the Dylos. It's simplest to leave this at 0.

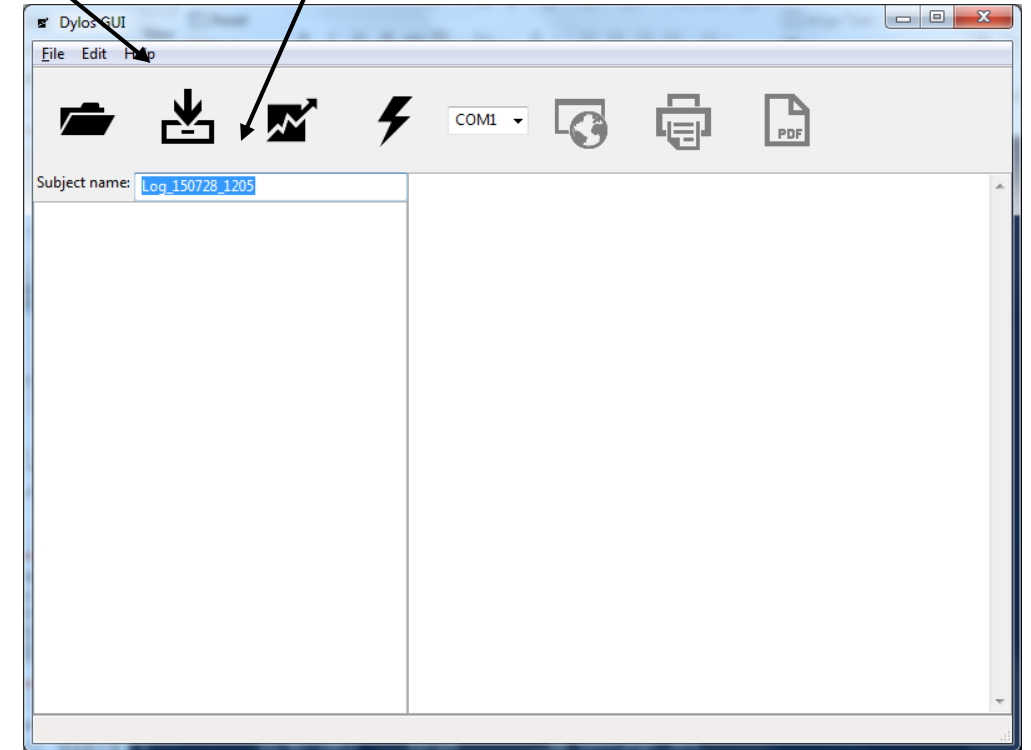
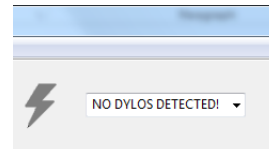
Make a PDF file containing the report (recommended). That makes it a lot easier to send the report from one computer to another. By default, PDF files are stored in My Documents\Dylos Logs

# Downloading a log

- Make sure the box on the right of the toolbar says "COM<number>"
- If it doesn't, take the Dylos out and plug it in again. Make sure it's on!
- If you keep getting "No Dylos Detected", make sure you have your cable's drivers installed.
- Be aware that downloading a log takes a few minutes. If you're downloading a full five days, best make a cup of tea.

Click here to download

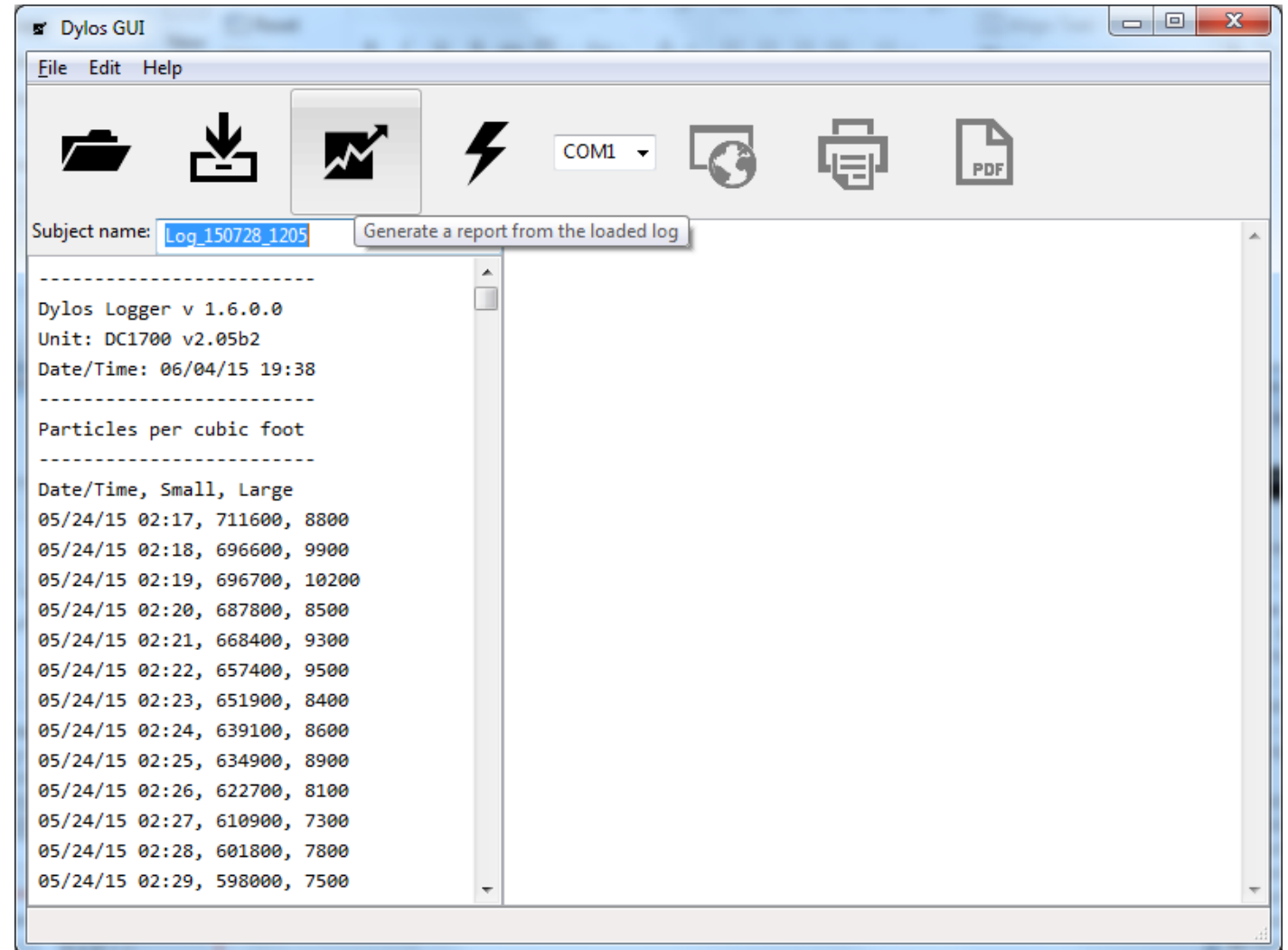
Type the name you want to give the report here, or it will be assigned a name based on the date and time of download





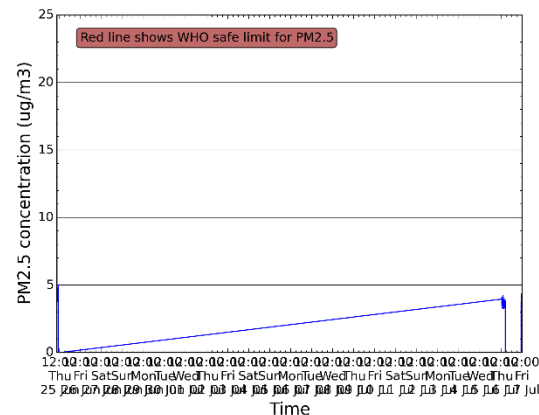
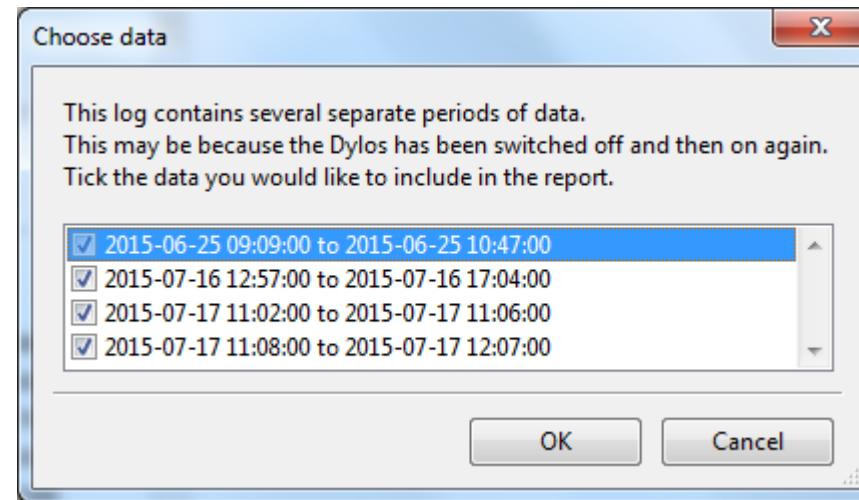
# Generating a standard report

- Click the graph icon to generate a report once you've downloaded a log
- This will take just a minute



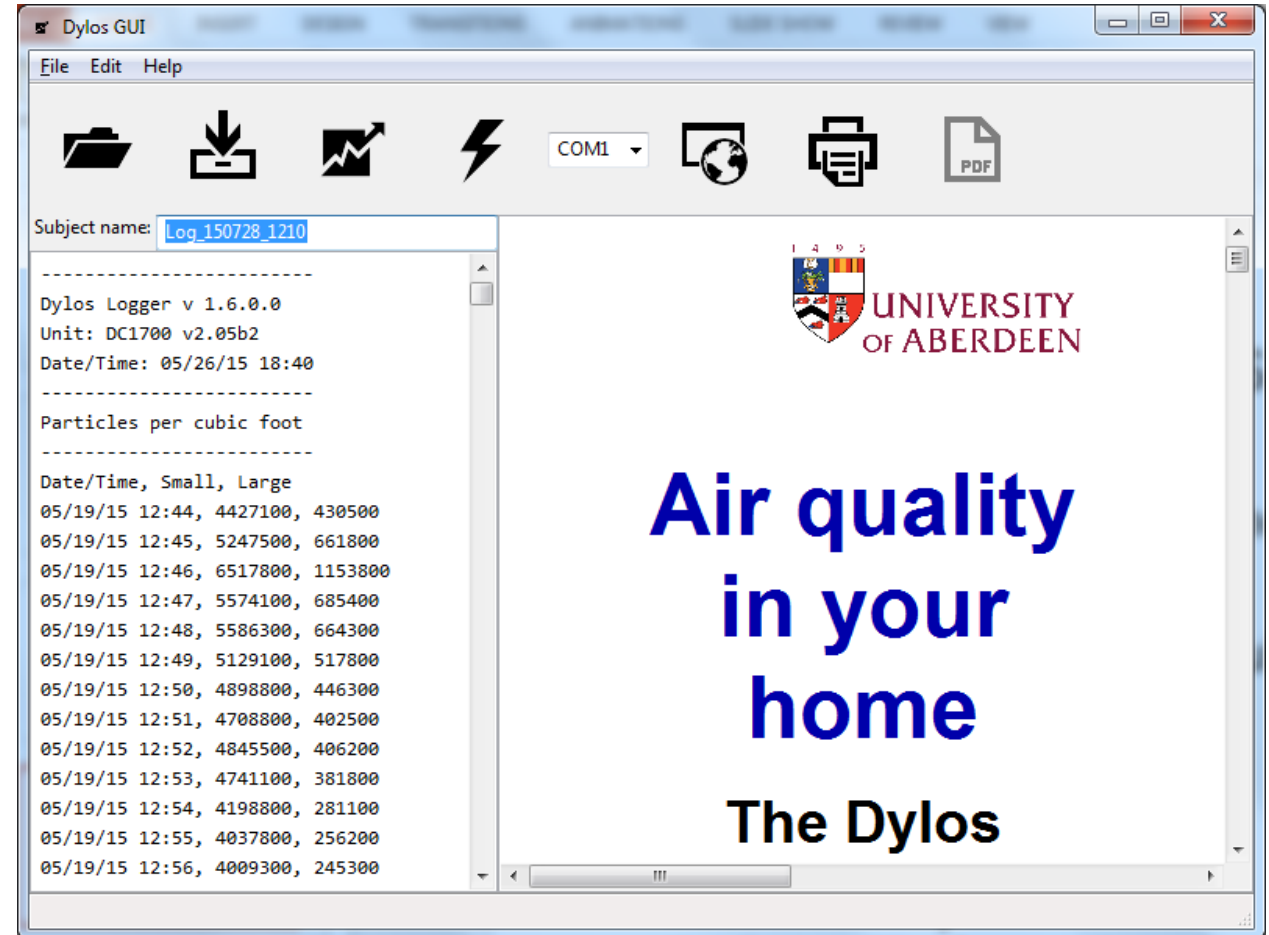
# If your Dylos was switched off and on...

- ...you might see this screen.
- You may wish only to choose the largest sections of data, otherwise the graph will be difficult to interpret (and not very useful, as below)



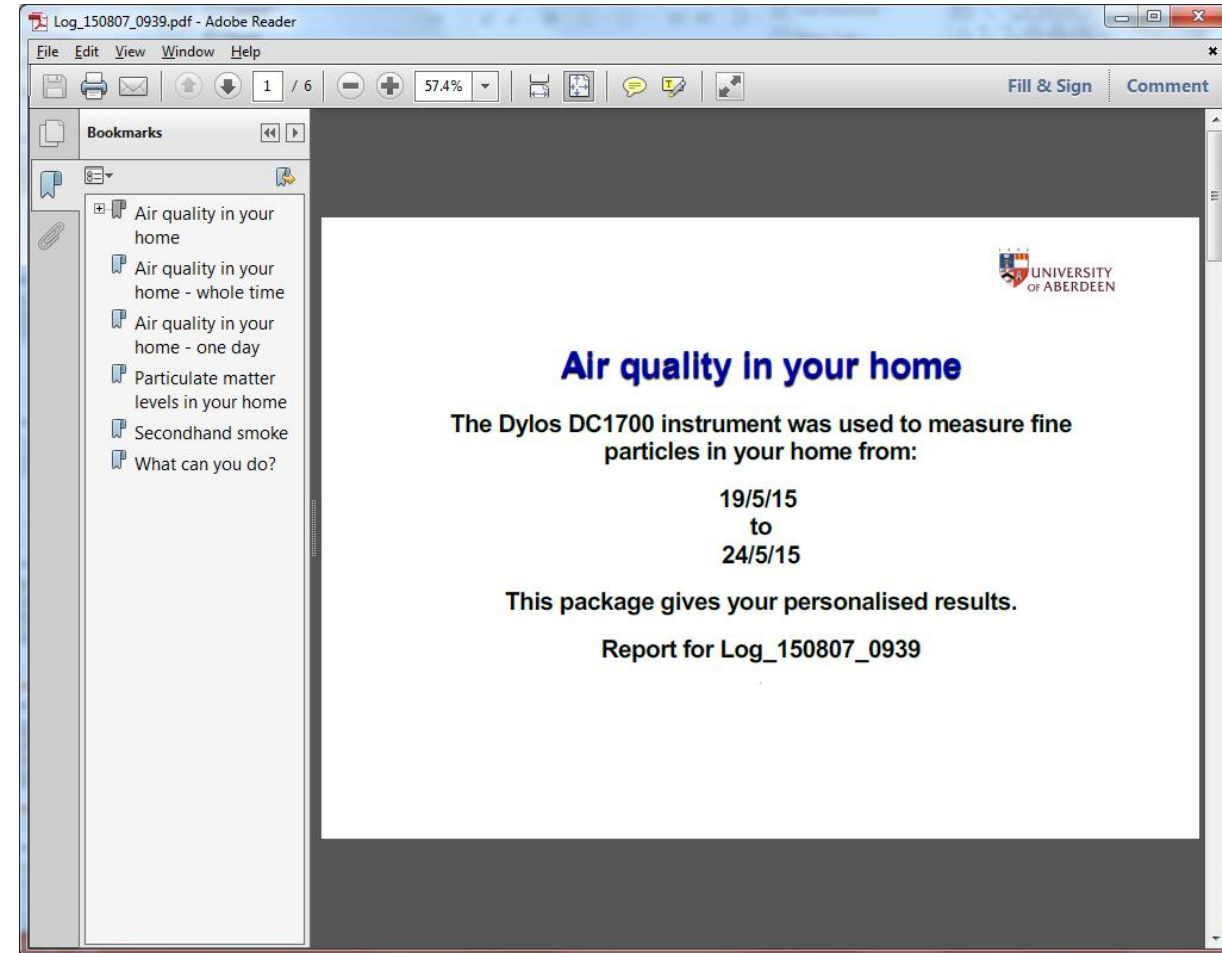
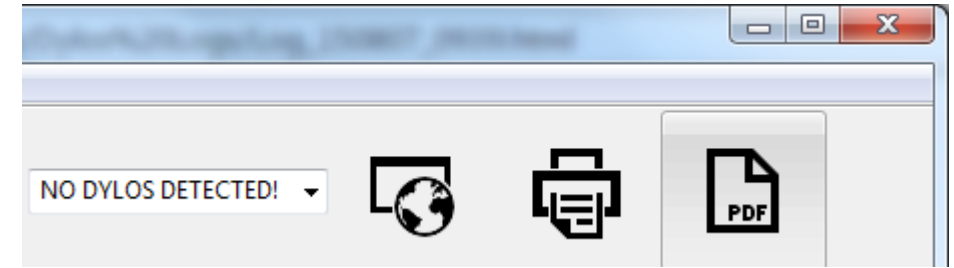
# When the report is generated

- You can see the report in the right hand panel
- If you haven't changed the settings, it should also open automatically in Internet Explorer, Firefox or Google Chrome
- The report can be skimmed in your browser, but should be printed from a PDF



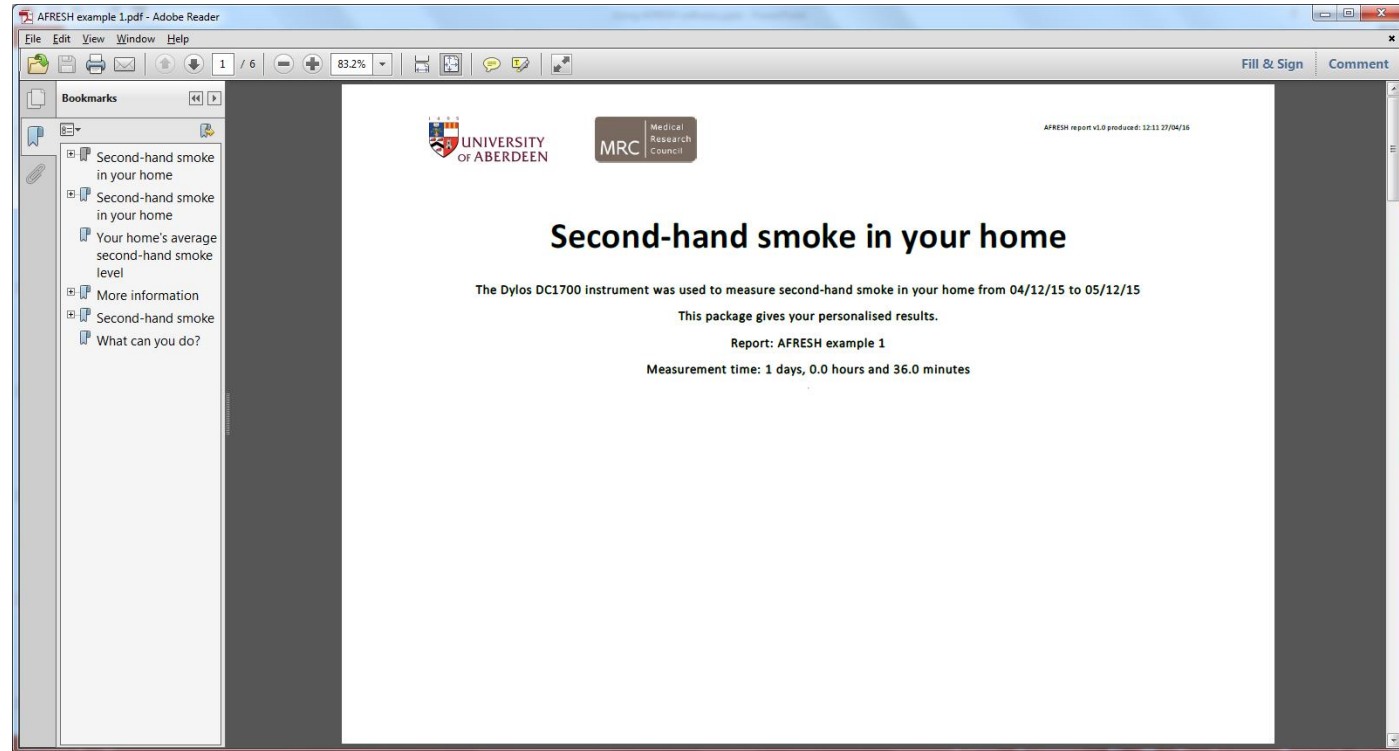
# Opening a PDF

- PDF files are easy to email and always look (and print) the same on different computers.
- Click on the PDF button to open it when your report has been generated.
- Note – you'll need Adobe Reader or similar software to open PDFs. This usually comes with your computer, or you can download it for free.



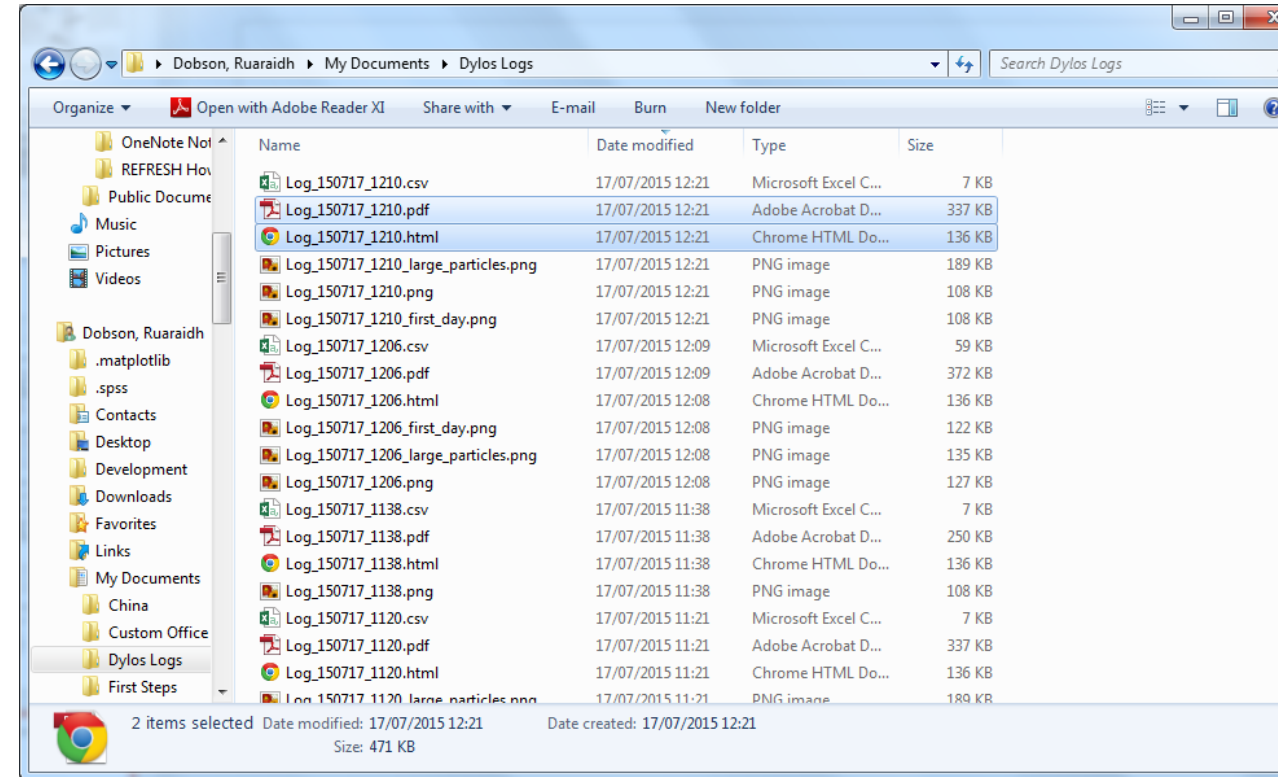
# Printing your report

- Open the PDF
- Then go to File and click Print (or press Ctrl-P)
  - It's best to print in colour if you can



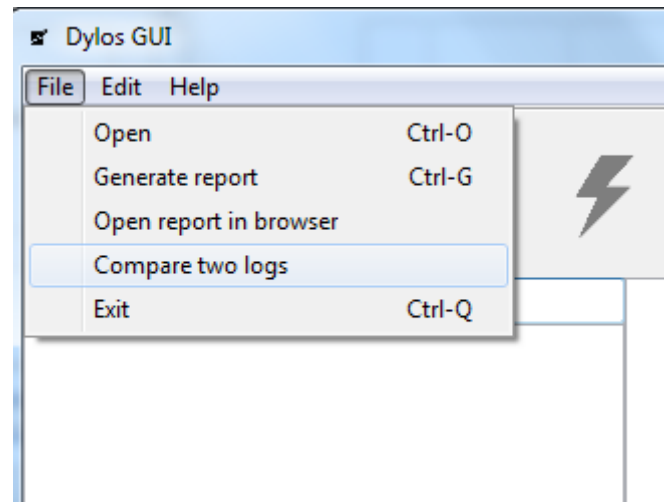
# Finding your reports

- By default, logs can be found in My Documents\Dylos Logs
- All the files have the name you gave the log under “Subject Name”, or a default name based on the date and time
- There are lots of files, but the only ones you need to worry about are those ending in “PDF” and “HTML”

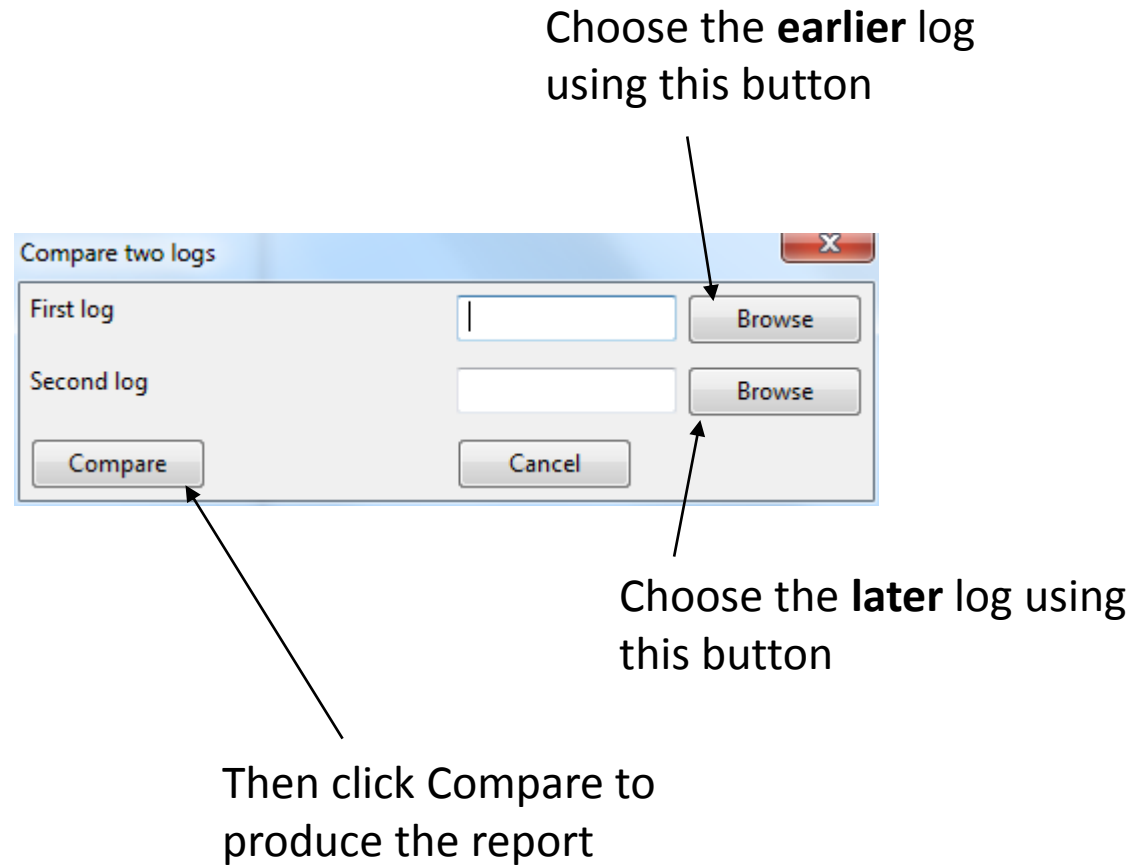


# Making a comparison report

- When the Dylos has been in a home for a second time, we want to compare the two results using a comparison report
- This shows if the client has made an improvement and whether the home is now safe



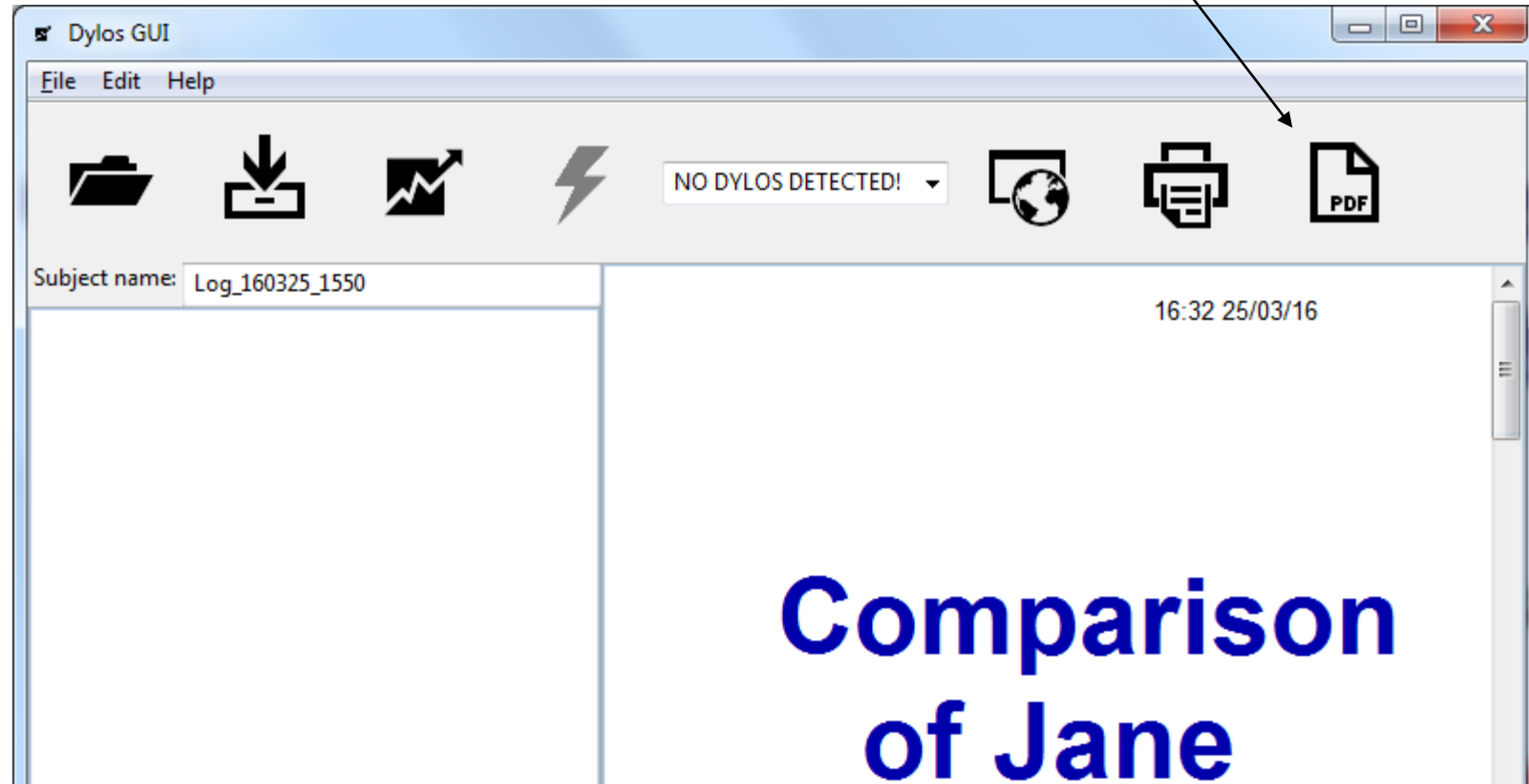
# Comparing two logs





# Printing the comparison report

- This is just like printing a standard report
- Press the Open PDF button and print from there



# If you find a bug

- Email me at [ruaraidh.dobon@abdn.ac.uk](mailto:ruaraidh.dobon@abdn.ac.uk)
- Include a full description of what you were doing and what happened.
- If you can, include a screenshot with your email (press “prt scn” at the top right of your keyboard, then paste into an email)
- Then, attach the following files to the email:
  - C:\Program Files\DylosGUI\debug\_log.txt
  - C:\Program Files\DylosGUI\settings.ini
  - If you can't find them, look under C:\Program Files (x86)\DylosGUI
- Thank you!